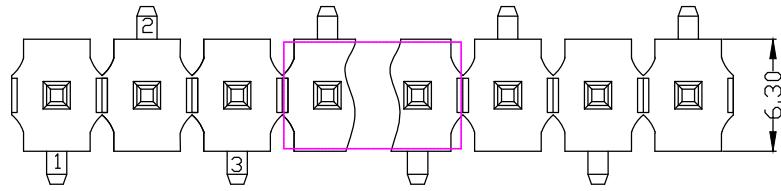
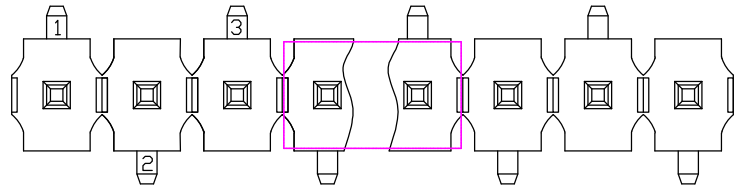


RoHS Compliant

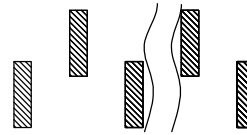
Rev.	change details	effective date	updated by	date
A	Initial release	2020.12.19	FHY	20.12.19



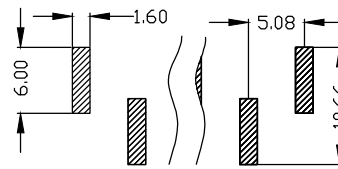
TYPE 1



TYPE 2



TYPE 1



TYPE 2

Recommended P.C.B. Layout

**Std. Material**

Contact: Brass  
 Contact Plating: Sn over 30u" Ni Min.  
 Insulator: LCP(UL94V-0).  
 Insulator Colour: Black

**Temperature**

Operating Temp.: -40°C to 105°C  
 Max. Processing Temp.: 260°C for 10s

**Electronic Specifications**

Current Rating : 7 AMP  
 Contact Resistance : 20mΩ Max.  
 Insulation Resistance : 1000MΩ Min.  
 Withstanding Voltage : AC 1000V for 60s

**Packing** : Tape&Reel or agree on \_\_\_\_\_

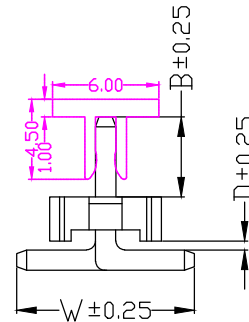
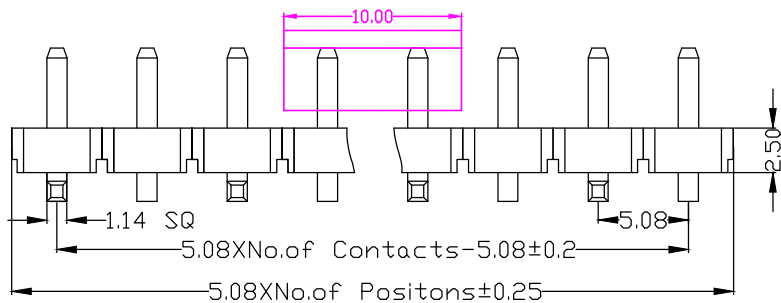
**Ordering Information**

No. of Pins	Contact Plating	Insulator Material
Rows*Pins 1 x 20	SN: Tin <input type="checkbox"/> G0: 0.8u" Gold <input type="checkbox"/> G1: 1u" Gold <input type="checkbox"/> G2: 1.5u" Gold <input type="checkbox"/> G3: 2u" Gold <input type="checkbox"/> G4: 3u" Gold <input type="checkbox"/> G5: __u" Gold <input type="checkbox"/>	A: PBT <input type="checkbox"/> B: PA6T <input type="checkbox"/> C: PA9T <input type="checkbox"/> D: PA66 <input type="checkbox"/> E: PA46 <input type="checkbox"/> F: LCP <input type="checkbox"/> G: _____ <input type="checkbox"/>
Ordering:(N) 1 X <input type="checkbox"/>		

**Ordering Dimensions**

A	B	C	D	H	W
PA	PB	PC	PD	PW	L

Remarks:



ITEM	W	B	D
Standard	10.0	4.5	15
Alternate			

UNLESS OTHERWISE STATED DIMENSIONS IN mm TOLERANCE:	ORIGINALLY BY
	DRAWN: FHY
	CHECKED: FY
	APPROVED: FY
	DATE:2020.12.19



**深圳市征华电子有限公司**  
 Shenzhen ZWON Electronics Co.,Ltd.

SERIES: PH5.08/Single Row/SMT

TYPICAL MODEL: 5.08mm 单排针 塑高2.5 SMT

Drawing No.	DRXXX-XX
Scale	Revision
FIT	A
Sheet	1 of 1
ZWON P/N:	
Customer P/N:	