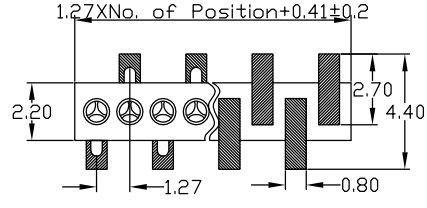
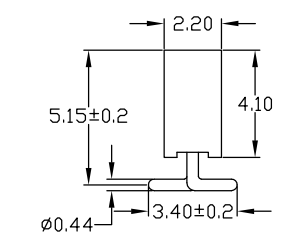
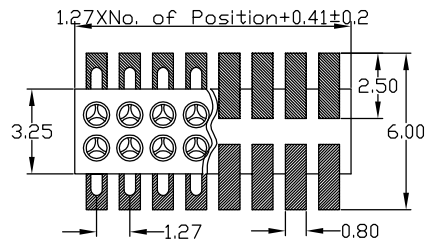
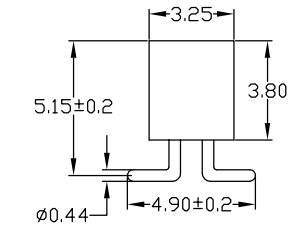


RoHS Compliant

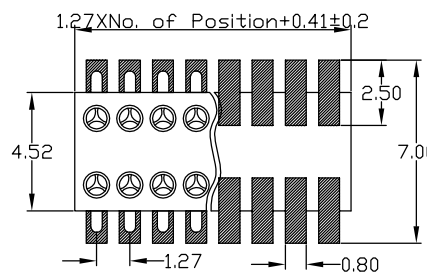
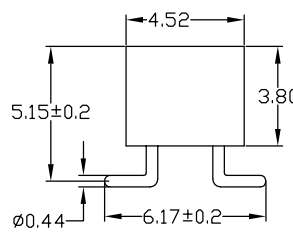
Rev.	change details	effective date	updated by	date
A	Initial release	2020.12.19	FHY	20.12.19



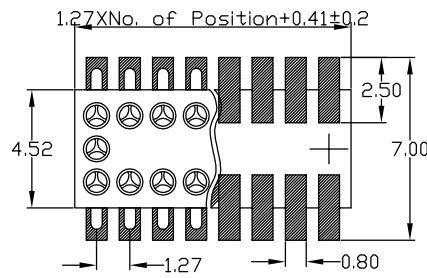
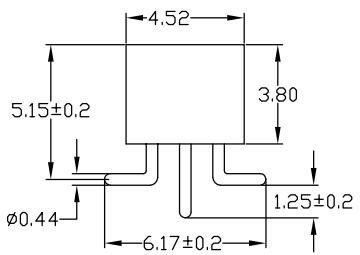
SMT socket connector:single row
perpendicular mount
Availability from:3 to 50 contacts
Standard number of contacts 25 and 50



SMT socket connector:single row
perpendicular mount
Availability from:4 to 100 contacts
Standard number of contacts 50 and 100



SMT socket connector:double row
with 2.54mm rowto row distance
perpendicular mount
Availability from:4 to 100 contact
Standard number of contacts 100



SMT socket connector:double row
with 2.54mm rowto row distance
perpendicular mount with 2
Availability from:4 to 100 contact
Standard number of contacts 100

Std. Material
Insulator :Black glass filled polyester PPS-GF30-FR
Fiammability : UL94V-0
Sleeve : Brass CuZn 36Pb3(36000)
Contact clip(3 finger):Beryllium copper (C17200)

Mating pin ϕ : 0.35 to 0.50 mm
Forces : (polished steel gauge ϕ 0.41mm)
-Insertion : 0.5 N typ
-Withdrawal : 0.2 N typ
Mechanical life : min 500 cycles
Rated current : 1Amp
Contact resistance: Max 10m Ω
Dielectric resistance : Min 500V RMS
Coplanariny SMT : max 0.1mm(measured)
terminations : 25mm long connectors

Temperature
Operating Temp. : -40 $^{\circ}$ C to 105 $^{\circ}$ C
Max. Processing Temp.: 260 $^{\circ}$ C for 10s
Packing : Tray or agree on _____

Ordering Information

No. of Pins	Contact Plating	Insulator Material
Rows*Pins	SN: Tin <input type="checkbox"/>	A: PBT <input type="checkbox"/>
1/2/3 x 50	G0: 0.8u" Gold <input type="checkbox"/>	B: PA6T <input type="checkbox"/>
Ordering:(N)	G1: 1u" Gold <input type="checkbox"/>	C: PA9T <input type="checkbox"/>
1/2/3 x <input type="text"/>	G2: 1.5u" Gold <input type="checkbox"/>	D: PA66 <input type="checkbox"/>
	G3: 2u" Gold <input type="checkbox"/>	E: PA46 <input type="checkbox"/>
	G4: 3u" Gold <input type="checkbox"/>	F: LCP <input type="checkbox"/>
	G5: __u" Gold <input type="checkbox"/>	G: _____ <input type="checkbox"/>

Ordering Dimensions

A	B	C	D	H	W
PA	PB	PC	PD	PW	L

Remarks:

UNLESS OTHERWISE STATED		ORIGINALLY BY
DIMENSIONS IN mm		DRAWN: FHY
TOLERANCE:		CHECKED: FY
ANGLEAR $\pm 1^{\circ}$	LINEAR	APPROVED: FY
	X 0.5	DATE:2020.12.19
	X.X ± 0.2	
	X.XX ± 0.1	



深圳市征华电子有限公司
Shenzhen ZWON Electronics Co.,Ltd.
SERIES: Round FH1.27/SMT
TYPICAL MODEL: 1.27圆孔排母 SMT

Drawing No.	DRXXX-XX	
Scale	Revision	Sheet
FIT	A	1 of 1
ZWON P/N:		
Customer P/N:		