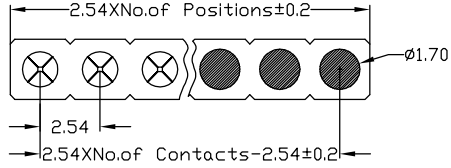
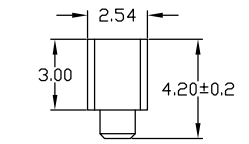
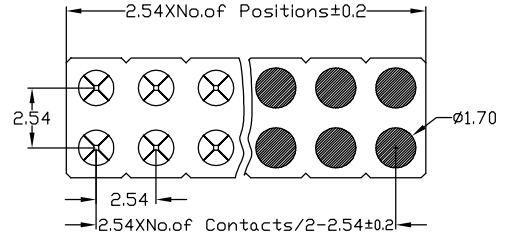
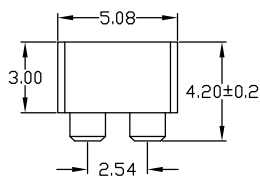


RoHS Compliant

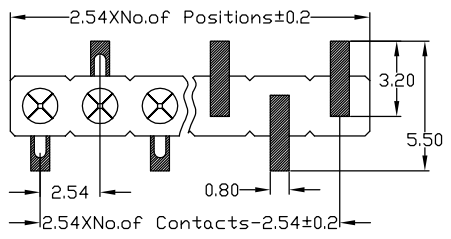
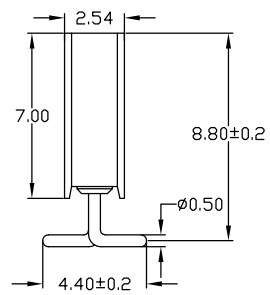
Rev.	change details	effective date	updated by	date
A	Initial release	2020.12.19	FHY	20.12.19



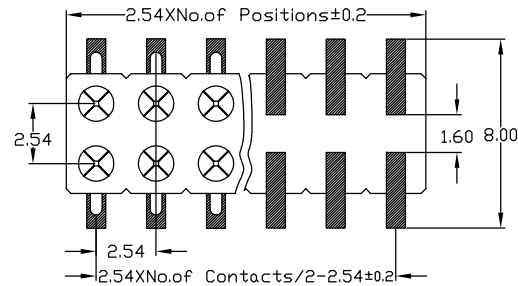
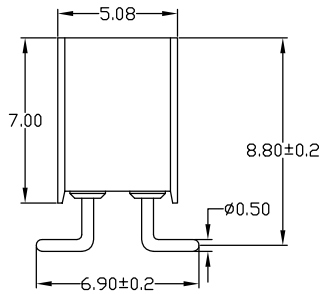
SMT socket connector, low profile single row, perpendicular  
Availability from: 2 to 40 contacts  
Standard number of contacts 5, 6, 8, 9, 10, 11, 12, 14, 16, 17, 20, 25, 30, 32 and 40



SMT socket connector, low profile double row, perpendicular mount with self-levelling flating  
Availability from: 4 to 80 contacts  
Standard number of contacts 64



SMT socket connector: single row, perpendicular mount with gull-wing terminations  
Availability from: 3 to 40 contacts  
Standard number of contacts 5, 6, 8, 9, 10, 11, 12, 14, 16, 17, 20, 25, 30, 32 and 40



SMT socket connector: double row, perpendicular mount with gull-wing terminations  
Availability from: 4 to 80 contacts  
Standard number of contacts 20, 56, 60, 64 and 72

**Std. Material**  
Insulator : Black glass filled polyester PPS-GF30-FR  
Flammability : UL94V-0  
Sleeve : Brass CuZn 36Pb3(36000)  
Contact cilp (6 finger) : Beryllium copper (C17200)  
Mating pin  $\phi$  : 0.70 to 0.90 mm or 0.635SQ  
Forces : (polished steel gauge  $\phi$ 0.76mm)  
-Insertion : 1.2 N typ.  
-Withdrawal : 0.6 N typ.  
Mechanical life : min 500 cycles  
Rated current : 3Amp  
Contact resistance: Max 10m $\Omega$   
Dielectric resistance : Min 1000V RMS  
Coplanar SMT terminations : max 0.1mm(measured on 25 mm long connectors)

**Temperature**  
Operating Temp. : -40  $^{\circ}$ C to 105  $^{\circ}$ C  
Max. Processing Temp.: 260  $^{\circ}$ C for 10s

**Packing** : Tray or agree on \_\_\_\_\_

**Ordering Information**

No. of Pins	Contact Plating	Insulator Material
Rows*Pins 1/2 x 40	SN: Tin <input type="checkbox"/> G0: 0.8u" Gold <input type="checkbox"/> G1: 1u" Gold <input type="checkbox"/> G2: 1.5u" Gold <input type="checkbox"/> G3: 2u" Gold <input type="checkbox"/> G4: 3u" Gold <input type="checkbox"/> G5: __u" Gold <input type="checkbox"/>	A: PBT <input type="checkbox"/> B: PA6T <input type="checkbox"/> C: PA9T <input type="checkbox"/> D: PA66 <input type="checkbox"/> E: PA46 <input type="checkbox"/> F: LCP <input type="checkbox"/> G: _____ <input type="checkbox"/>
Ordering:(N) 1/2 x <input type="text"/>		

**Ordering Dimensions**

A	B	C	D	H	W
PA	PB	PC	PD	PW	L

Remarks:

UNLESS OTHERWISE STATED DIMENSIONS IN mm TOLERANCE:		ORIGINALLY BY	
		DRAWN: FHY	
		CHECKED: FY	
		APPROVED: FY	
ANGLEAR $\pm 1^{\circ}$	LINEAR X 0.5 X.X $\pm 0.2$ X.XX $\pm 0.1$	DATE: 2020.12.19	

**深圳市征华电子有限公司**  
Shenzhen ZWON Electronics Co.,Ltd.  
SERIES: Round FH2.54/SMT  
TYPICAL MODEL: 2.54圆孔排母 SMT

Drawing No.	DRXXX-XX	
Scale	Revision	Sheet
FIT	A	1 of 1
ZWON P/N:		
Customer P/N:		