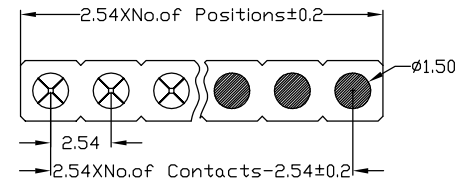
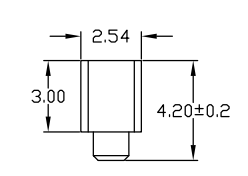
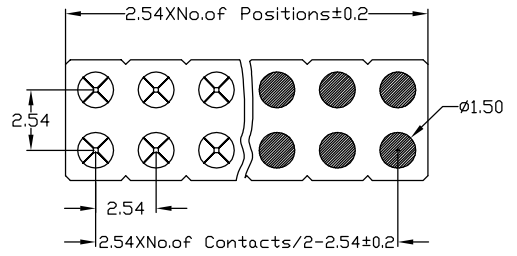
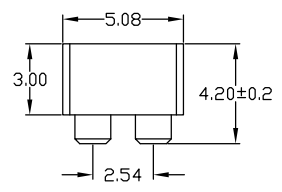


RoHS Compliant

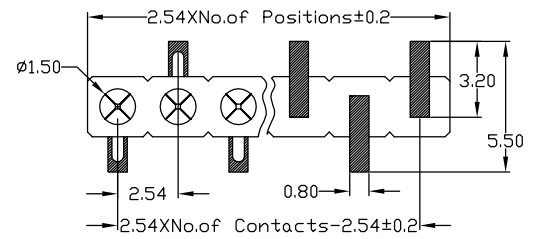
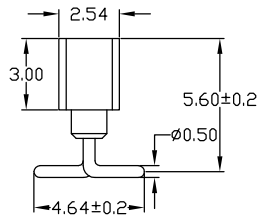
Rev.	change details	effective date	updated by	date
A	Initial release	2020.12.19	FHY	20.12.19



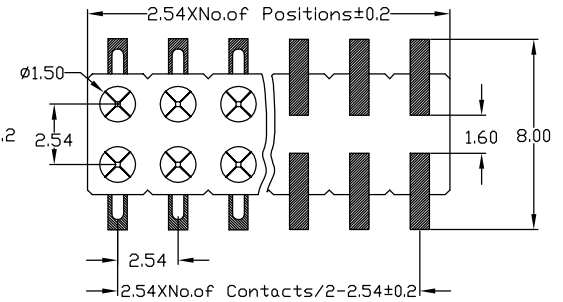
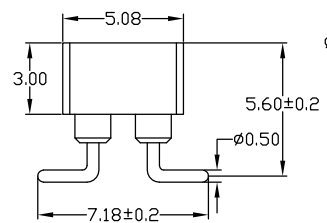
SMT socket connector, low profile single row, perpendicular
Availability from: 2 to 40 contacts
Standard number of contacts 5, 6, 8, 9, 10, 11, 12, 14, 16, 17, 20, 25, 30, 32 and 40



SMT socket connector, low profile double row, perpendicular mount with self-levelling flating
Availability from: 4 to 80 contacts
Standard number of contacts 64



SMT socket connector: single row, perpendicular mount with gull-wing terminations
Availability from: 3 to 40 contacts
Standard number of contacts 5, 6, 8, 9, 10, 11, 12, 14, 16, 17, 20, 25, 30, 32 and 40



SMT socket connector: double row, perpendicular mount with gull-wing terminations
Availability from: 4 to 80 contacts
Standard number of contacts 20, 56, 60, 64 and 72

Std. Material
Insulator : Black glass filled polyester PPS-GF30-FR
Flammability : UL94V-0
Sleeve : Brass CuZn 36Pb3(36000)
Contact cilp (4 finger) : Beryllium copper (C17200)

Mating pin ϕ : 0.40 to 0.56 mm
Forces : (polished steel gauge ϕ 0.43mm)
-Insertion : 2 N typ.
-Withdrawal : 1 N typ.
Mechanical life : min 500 cycles
Rated current : 3Amp
Contact resistance: Max 10m Ω
Dielectric resistance : Min 1000V_{RMS}
Coplanarity SMT terminations : max 0.1mm(measured on 25 mm long connectors)

Temperature
Operating Temp. : -40 $^{\circ}$ C to 105 $^{\circ}$ C
Max. Processing Temp.: 260 $^{\circ}$ C for 10s
Packing : Tray or agree on _____

Ordering Information

No. of Pins	Contact Plating	Insulator Material
Rows*Pins 1/2 x 40	SN: Tin <input type="checkbox"/> G0: 0.8u" Gold <input type="checkbox"/> G1: 1u" Gold <input type="checkbox"/> G2: 1.5u" Gold <input type="checkbox"/> G3: 2u" Gold <input type="checkbox"/> G4: 3u" Gold <input type="checkbox"/> G5: ___u" Gold <input type="checkbox"/>	A: PBT <input type="checkbox"/> B: PA6T <input type="checkbox"/> C: PA9T <input type="checkbox"/> D: PA66 <input type="checkbox"/> E: PA46 <input type="checkbox"/> F: LCP <input type="checkbox"/> G: _____ <input type="checkbox"/>
Ordering:(N) 1/2 X <input type="checkbox"/>		

Ordering Dimensions

A	B	C	D	H	W
PA	PB	PC	PD	PW	L

Remarks:

UNLESS OTHERWISE STATED DIMENSIONS IN mm TOLERANCE:		ORIGINALLY BY
		DRAWN: FHY
ANGLEAR $\pm 1^{\circ}$	LINEAR X 0.5 X.X ± 0.2 X.XX ± 0.1	CHECKED: FY
		APPROVED: FY
		DATE: 2020.12.19



深圳市征华电子有限公司
Shenzhen ZWON Electronics Co.,Ltd.

SERIES: Round FH2.54*3.0/SMT

TYPICAL MODEL: 2.54圆孔排母 塑高3.0 SMT

Drawing No.	DRXXX-XX	
Scale	Revision	Sheet
FIT	A	1 of 1
ZWON P/N:		
Customer P/N:		