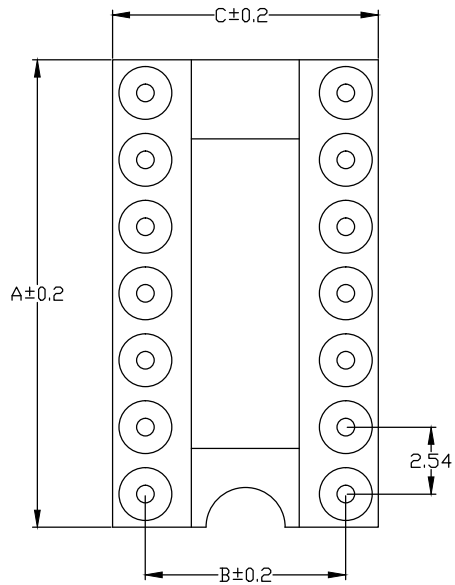
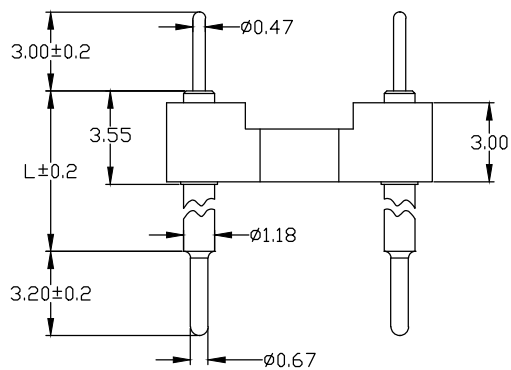


RoHS Compliant

Rev.	change details	effective date	updated by	date
A	Initial release	2020.12.19	FHY	20.12.19



Contact length L:
6.2mm, 8.4mm, 15.3mm,
21.2mm, 27.4mm



See page 33	No. of Positions	A	B	C
fig. 1	6	7.6	7.62	10.1
fig. 2	8	10.1	7.62	10.1
fig. 3	10	12.6	7.62	10.1
fig. 4	12	15.2	7.62	10.1
fig. 5	14	17.7	7.62	10.1
fig. 6	16	20.3	7.62	10.1
fig. 7	18	22.8	7.62	10.1
fig. 8	20	25.3	7.62	10.1
fig. 9	22	27.8	7.62	10.1
fig. 10	24	30.4	7.62	10.1
fig. 11	28	35.5	7.62	10.1
fig. 12	20	25.4	10.16	12.6
fig. 13	22	27.8	10.16	12.6
fig. 14	24	30.4	10.16	12.6
fig. 15	28	35.5	10.16	12.6
fig. 16	32	40.6	10.16	12.6
fig. 17	24	30.5	15.24	17.7
fig. 18	28	35.5	15.24	17.7
fig. 19	32	40.6	15.24	17.7
fig. 20	36	45.7	15.24	17.7
fig. 21	40	50.8	15.24	17.7
fig. 22	42	53.3	15.24	17.7
fig. 23	48	60.9	15.24	17.7
fig. 24	50	63.5	15.24	17.7
fig. 25	52	66.0	15.24	17.7
fig. 26	50	63.5	22.86	25.3
fig. 27	52	66.0	22.86	25.3
fig. 28	64	82.1	22.86	25.3

Std. Material
 Insulator: Black glass filled polyester PPS-GF30-FR
 Flammability: UL94V-0
 Sleeve: Brass CuZn 36Pb3(36000)
 Mating pin ϕ : 0.47mm
 Mechanical life: min 100 cycles
 Rated current: 1Amp
 Contact resistance: Max 10m Ω
 Dielectric resistance: Min 1000V_{RMS}
Temperature
 Operating Temp.: -40°C to 105°C
 Max. Processing Temp.: 260°C for 10s
Packing: Tray or agree on _____

Ordering Information

No. of Pins	Contact Plating	Insulator Material
Rows*Pins 2 x 40	SN: Tin <input type="checkbox"/> G0: 0.8u" Gold <input type="checkbox"/> G1: 1u" Gold <input type="checkbox"/> G2: 1.5u" Gold <input type="checkbox"/> G3: 2u" Gold <input type="checkbox"/> G4: 3u" Gold <input type="checkbox"/> G5: ___u" Gold <input type="checkbox"/>	A: PBT <input type="checkbox"/> B: PA6T <input type="checkbox"/> C: PA9T <input type="checkbox"/> D: PA66 <input type="checkbox"/> E: PA46 <input type="checkbox"/> F: LCP <input type="checkbox"/> G: _____ <input type="checkbox"/>
Ordering:(N) 2 X <input type="checkbox"/>		

Ordering Dimensions

A	B	C	D	H	W
PA	PB	PC	PD	PW	L

Remarks:

UNLESS OTHERWISE STATED
 DIMENSIONS IN mm
 TOLERANCE:

ANGLEAR	X	0.5
	X.X	±0.2
	X.XX	±0.1

ORIGINALLY BY
 DRAWN: FHY
 CHECKED: FY
 APPROVED: FY
 DATE: 2020.12.19



深圳市征华电子有限公司
 Shenzhen ZWON Electronics Co.,Ltd.
 SERIES: 2.54 Round IC Socket/Straight
 TYPICAL MODEL: 2.54圆孔 IC座 塑高3.0 180度

Drawing No.	DRXXX-XX	
Scale	Revision	Sheet
FIT	A	1 of 1
ZWON P/N:		
Customer P/N:		